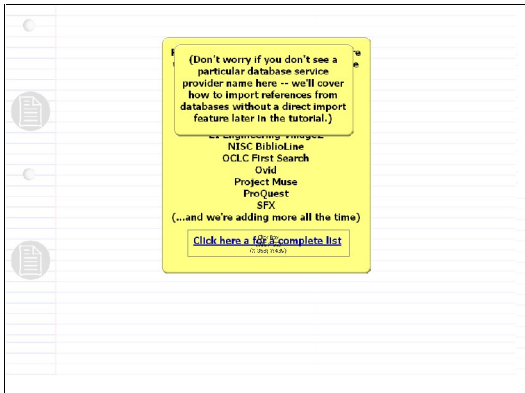


RefWorks - Direct Import from an Online Database Service

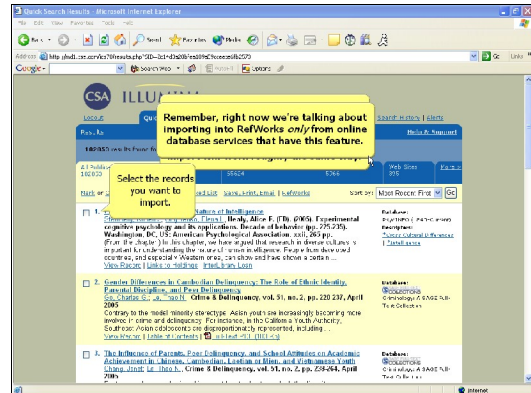


RefWorks has a "direct import" feature within several online database service providers including:

ABC-CLIO, CSA, EBSCOHost, EI Engineering Village2, NISC, BiblioLine, OCLC First Search, Ovid, Project Muse, ProQuest, SFX

(...and we're adding more all the time)

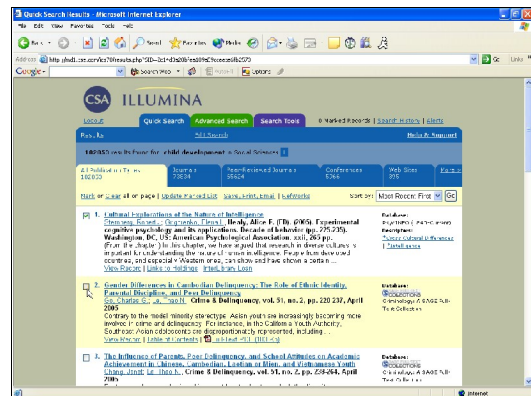
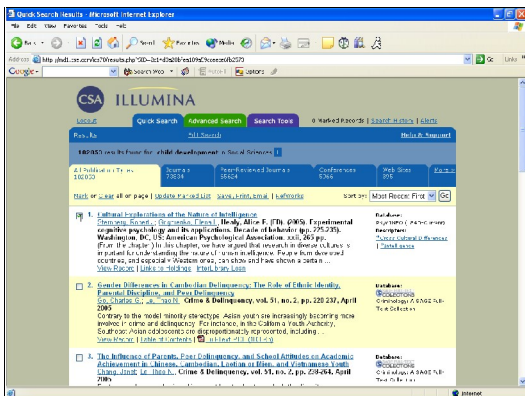
(Don't worry if you don't see a particular database service provider name here -- we'll cover how to import references from databases without a direct import feature later in the tutorial.)



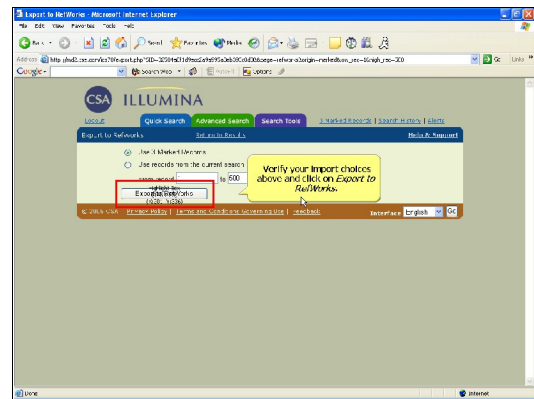
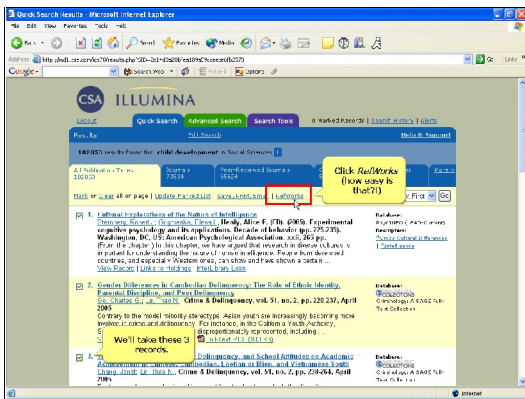
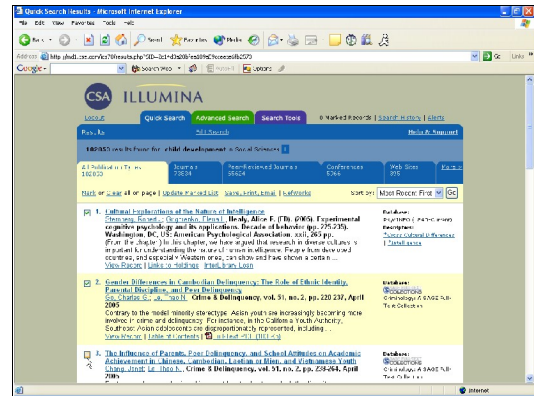
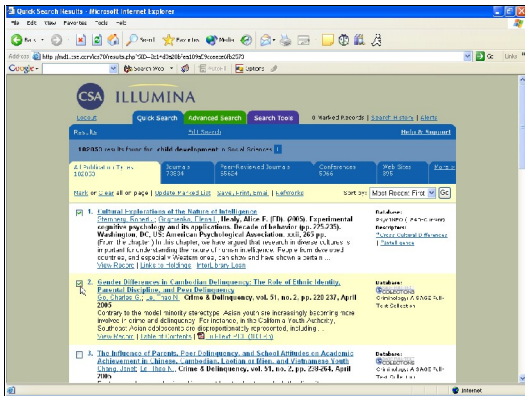
Let's assume we've already done our search in our online database. We'll use CSA Illumina as our example. The other online database services with direct import will work roughly the same way.

Remember, right now we're talking about importing into RefWorks only from online database services that have this feature.

Select the records you want to import.



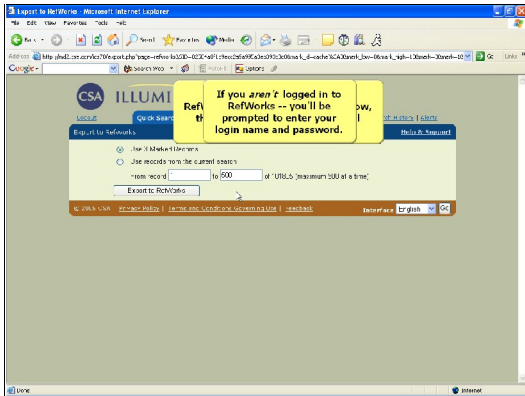
RefWorks - Direct Import from an Online Database Service



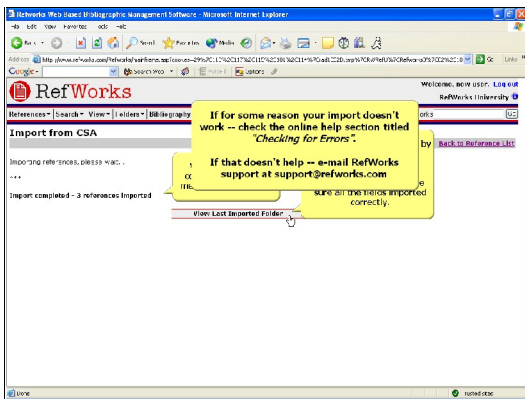
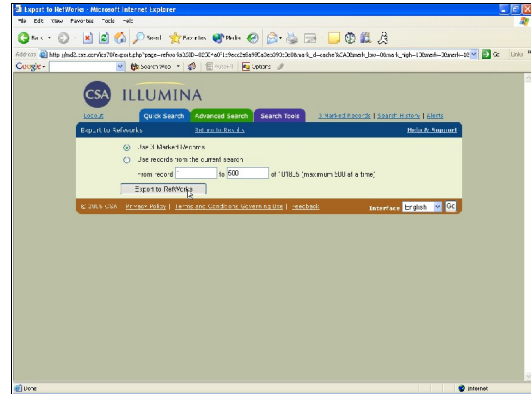
We'll take these 3 records.
Click RefWorks
(how easy is that?!)

Verify your import choices above and click on Export to RefWorks.

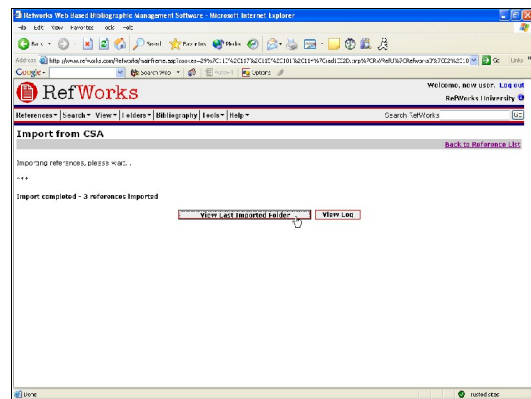
RefWorks - Direct Import from an Online Database Service



If you are already logged in to RefWorks in another browser window, the import from CSA Illumina will happen automatically.
If you aren't logged in to RefWorks -- you'll be prompted to enter your login name and password.

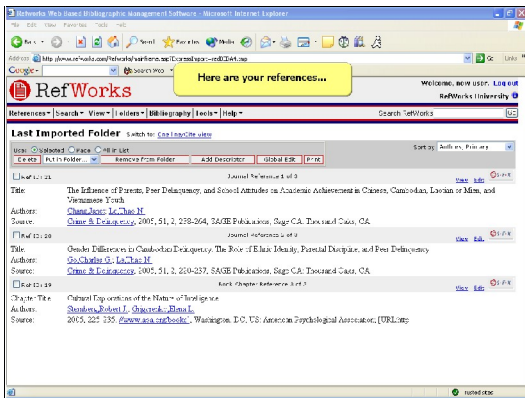


When the import is complete, you'll get a message telling you so.
You can view your records by clicking on View Last Imported Folder.
View each record to make sure all the fields imported correctly.
If for some reason your import doesn't work -- check the online help section titled "Checking for Errors".

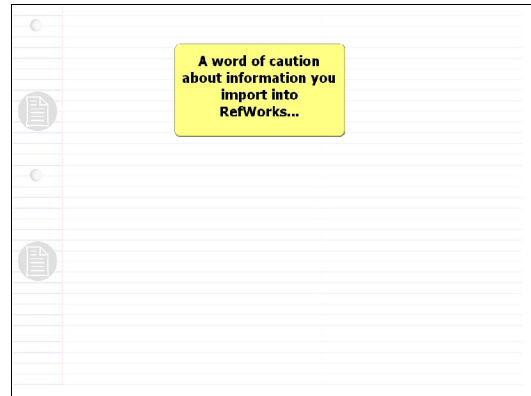


If that doesn't help -- e-mail RefWorks support at support@refworks.com

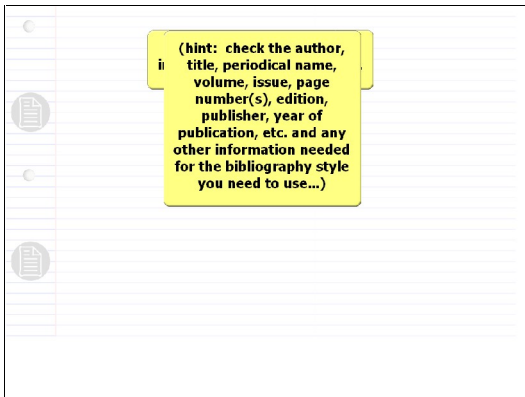
RefWorks - Direct Import from an Online Database Service



Here are your references...



A word of caution about information you import into RefWorks...



RefWorks doesn't write the information -- it only reads it. That means, you should check your references to make sure the information you need is in the correct location.

(hint: check the author, title, periodical name, volume, issue, page number(s), edition, publisher, year of publication, etc. and any other information needed for the bibliography style you need to use...)

Next you'll learn how to import records that don't have a direct import feature...

Select Importing Text Files from the menu to continue.